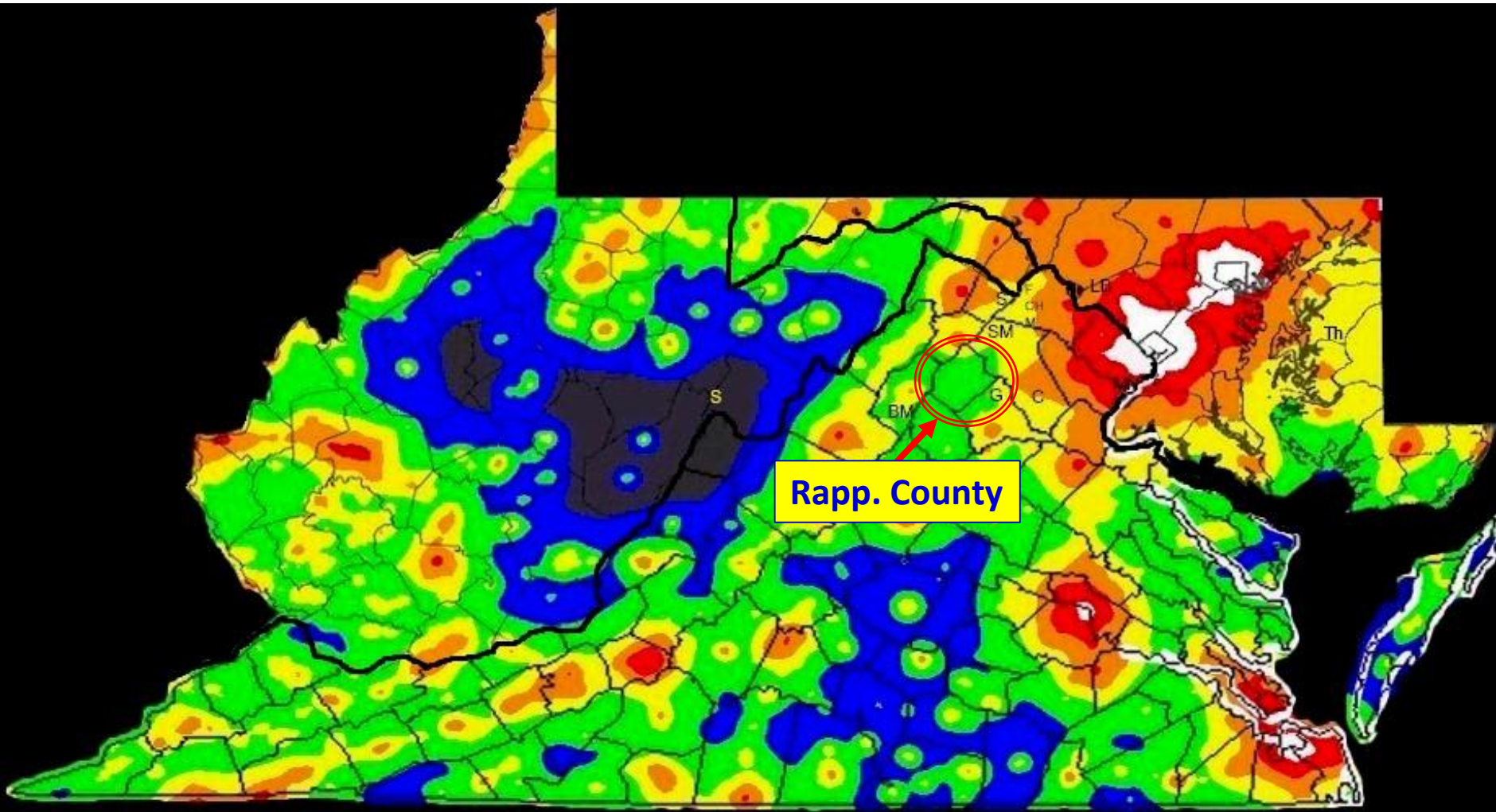




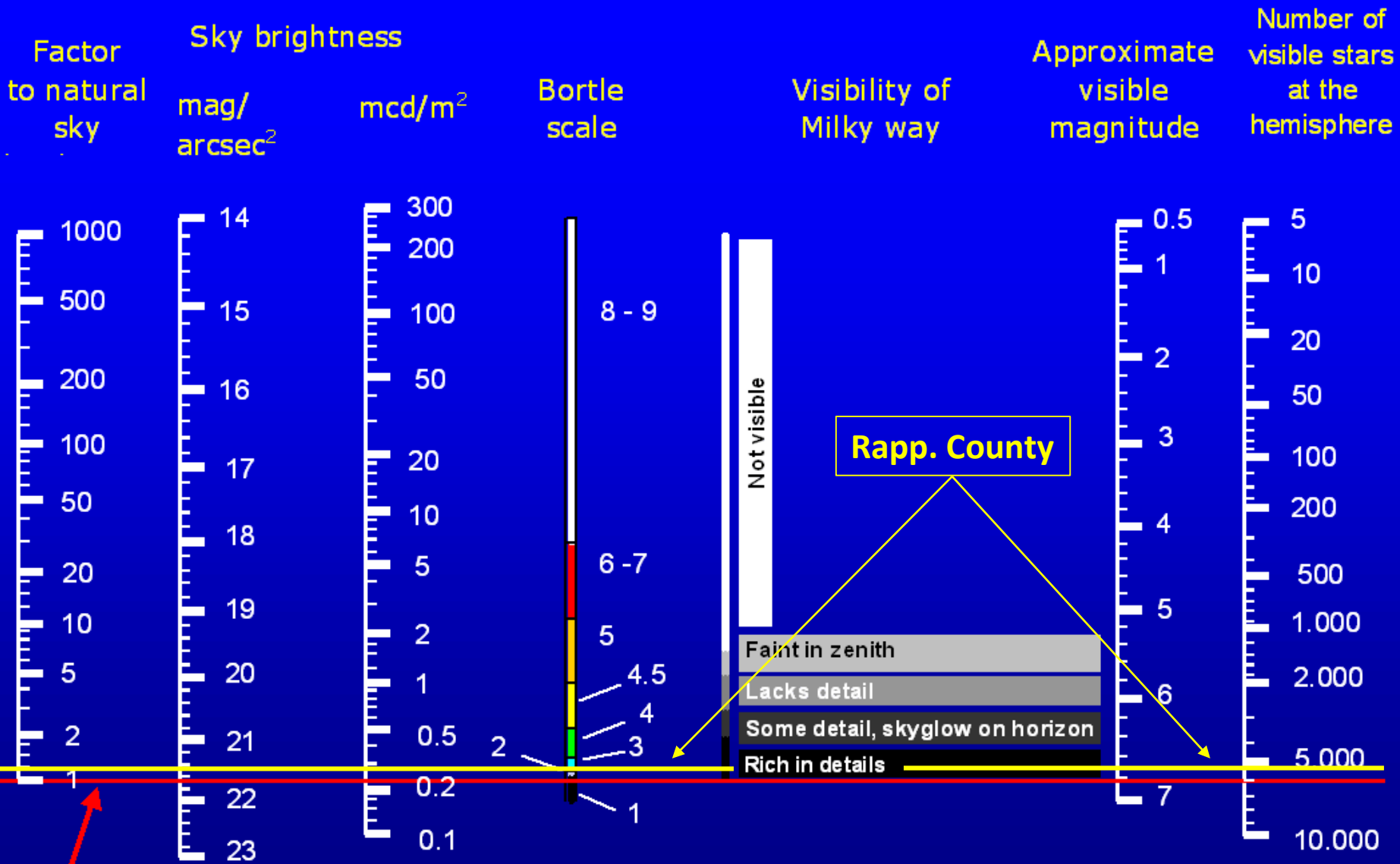
How Dark are Rappahannock Skies?

RLEP

2017

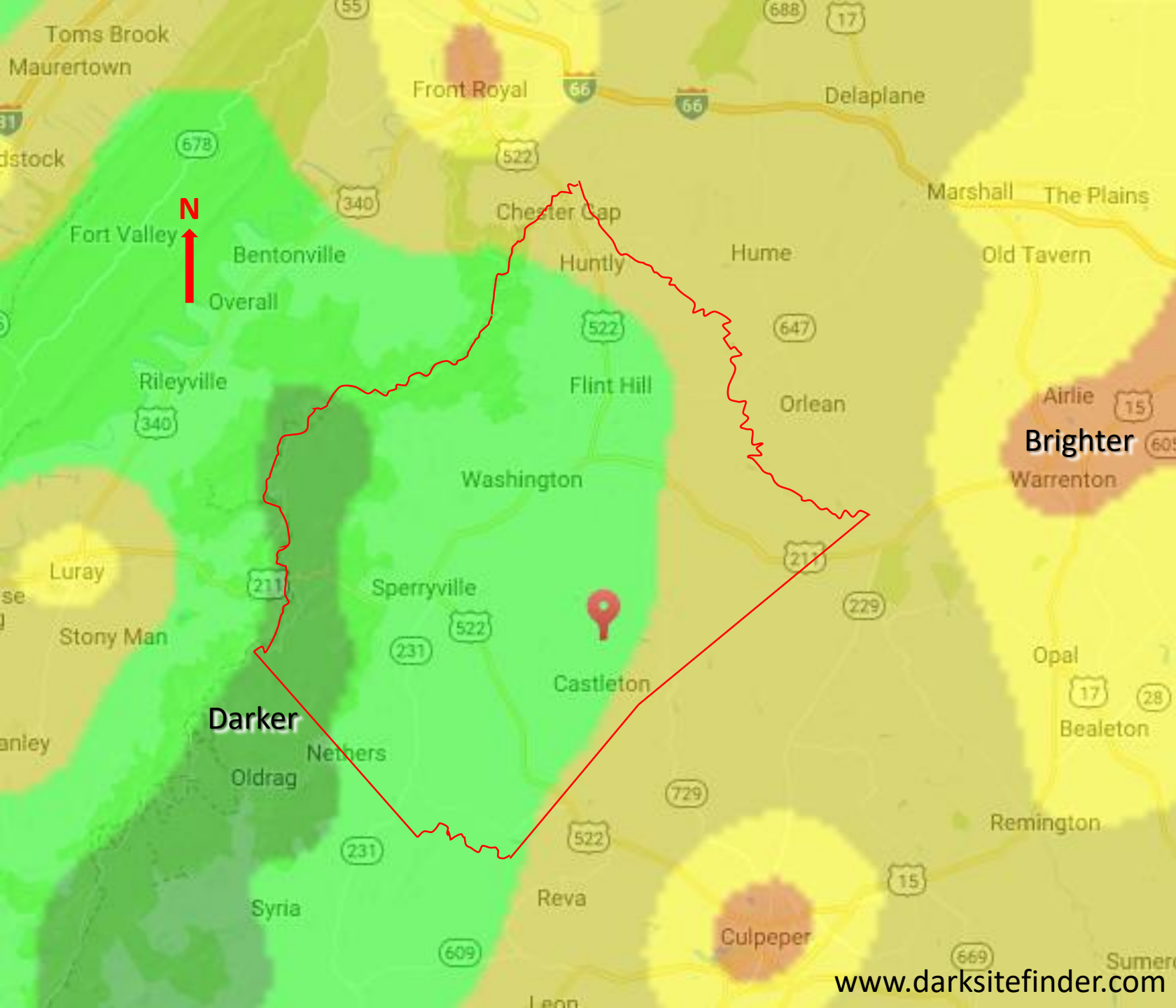


**Light Pollution Map with Rappahannock County Highlighted
(dark, but not as dark as parts of West Virginia)**

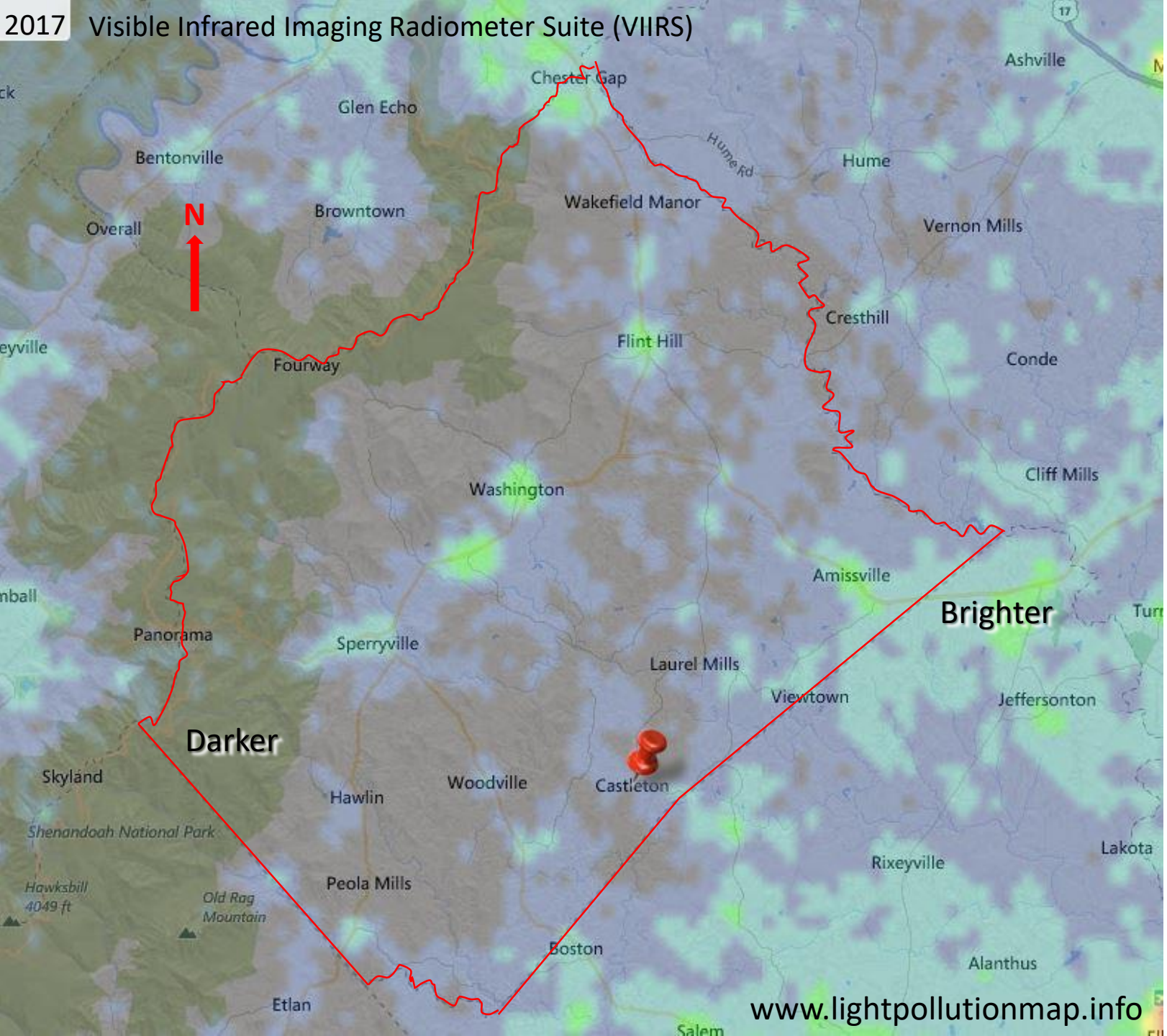


Natural unpolluted starry sky

Rapp. skies are quite dark allowing view of over 5000 stars



Dark Skies Map of Rapp. County



Dark Skies Map of Rapp. County



LIGHT POLLUTION LEVEL - 3
CRATER LAKE NATIONAL PARK, OR



LIGHT POLLUTION LEVEL - 4
PIGEON POINT LIGHTHOUSE, CA

Rappahannock skies
range between
Bortle Class 3 (rural)
and
Bortle Class 4
(rural/suburban
transition)



Milky Way as seen from Castleton, VA

Sept. 16, 2017

composite of separate sky and land
photos to highlight details of both

(courtesy of Joyce Harman)



Skies as seen from the Rappahannock County Park

Sept. 16, 2017

Washington, VA

(courtesy of Joyce Harman)

